

# EDUCATION 2024

Arts and Cultural Experiences in Bathurst for Students K–12

CREATIVE ARTS

ENGLISH

HSIE

LANGUAGES

SCIENCE

TECHNOLOGICAL AND

APPLIED STUDIES



*Production still from Arc, photo by Lisa Haymes  
– see page 44*

# WELCOME TO OUR EDUCATION PROGRAMS FOR 2024

Arts and culture are the soul of life. They help to shape us, understand the world around us and our place in it. They are for everyone. Making sure all students across the region can access quality arts and cultural experiences is essential to the cultural facilities of Bathurst Regional Council.

Bathurst offers an amazing array of education excursion options to enrich the learning of your students across multiple areas of the curriculum. This document focuses on performing arts experiences at Bathurst Memorial Entertainment Centre (BMEC) and visual arts experiences at Bathurst Regional Art Gallery (BRAG). It also has information from Museums Bathurst which includes Australian Fossil and Mineral Museum, Bathurst Rail Museum, Chifley Home and Education Centre, and the National Motor Racing Museum. Collectively the cultural facilities of Bathurst Regional Council are contributing to the education hub that Bathurst has become.

This document is in chronological order to make it easy to navigate. Programs that are on offer year-round are up first, followed by what's available term by term. Each program identifies what extras are on offer such as teaching resources and additional activities, and the links to the NSW curriculum across multiple subjects. We offer arts and cultural experiences for students from Early Stage 1 through to Stage 6 covering subjects in CAPA, English, HSIE, Science and Technology.

Each activity has clearly marked key information such as suitability, dates and times, costs, how to book, and any themes that you need to know about in advance.

We look forward to welcoming you to BMEC, BRAG and the Museums of Bathurst in 2024 and creating enriching learning experiences for your students.

*We acknowledge the traditional owners of the land on which our cultural facilities are built, the Wiradjuri – the original storytellers, musicians, dancers, artists and culture makers of this region. We acknowledge Elders past, present and emerging.*

*Always was, always will be, Aboriginal land.*





*Production still from Slap. Bang. Kiss. photo by Tiffany Garvie  
– see page 42*





# CONTENTS

## ALL YEAR

---

BRAG – Home Program .....	06
BRAG – Art in a Suitcase .....	08
Australian Fossil & Mineral Museum .....	10
Chifley Home & Education Centre .....	12
Bathurst Rail Museum .....	14
National Motor Racing Museum .....	16

## TERM 1

---

Australian Haydn Ensemble .....	18
Exhibition – Deborah Kelly: CREATION .....	20
Medea .....	22

## TERM 2

---

Exhibitions – Sara Morawetz: Étalon + A Land for the Living .....	24
You Are A Doughnut .....	26
The Trojan War .....	28
Creative Writing Workshops .....	30
Fourteen .....	32
Sharp Short Story .....	34
Sharp Short Theatre .....	36

## TERM 3

---

Exhibition – Dhuluny .....	38
The Gruffalo .....	40
Slap. Bang. Kiss. .....	42
Arc .....	44
Exhibition – We Grow Accustomed to the Dark .....	46

## TERM 4

---

Past the Shallows .....	48
Exhibition – Blue Assembly .....	50

**Youth Advocates .....** 52

**Accessibility .....** 54

**How to Book .....** 54

**Getting Here and Map .....** 56

# ALL YEAR HOME PROGRAM

## CURRICULUM LINKS

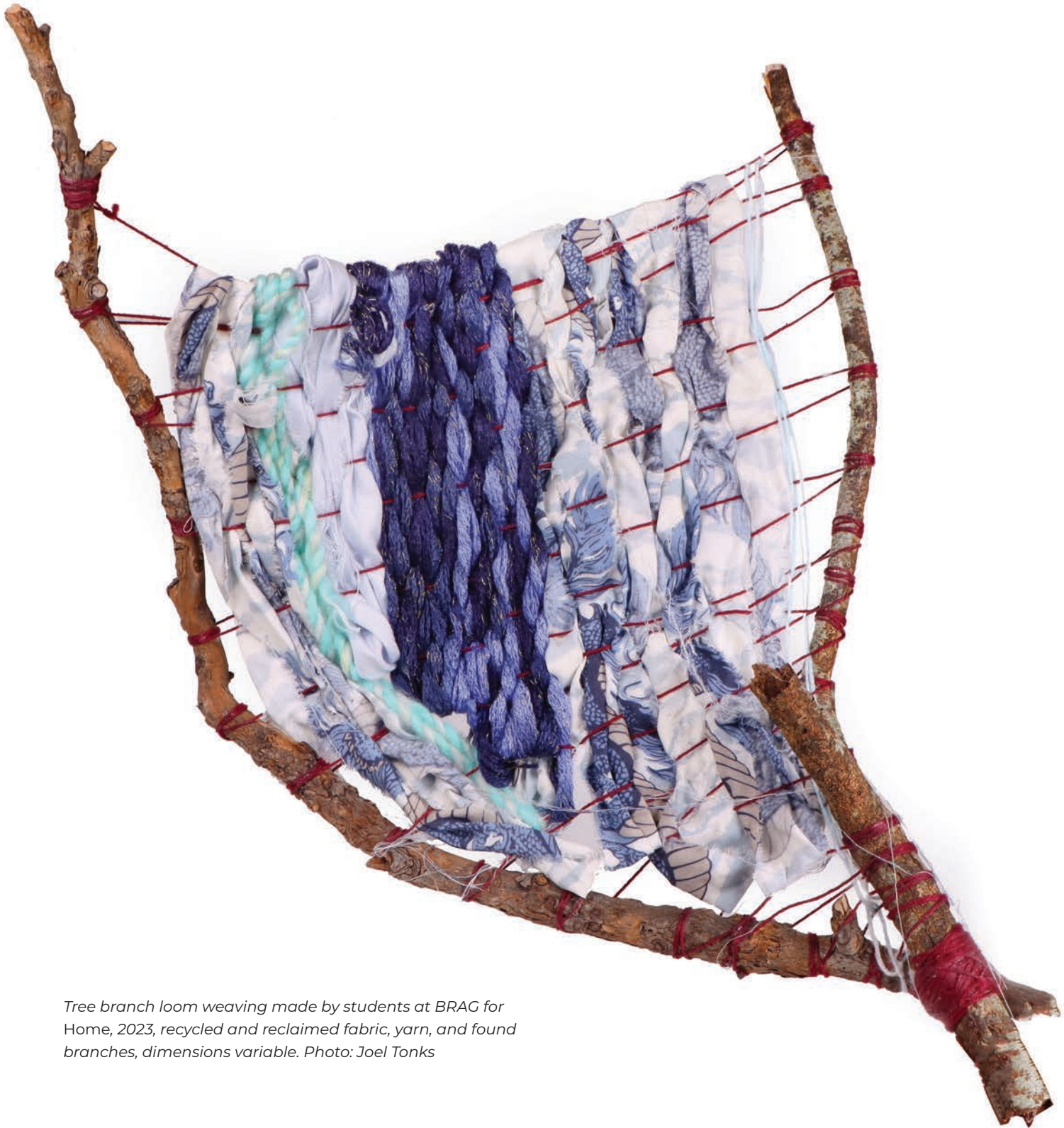
### STAGE 3

**SUBJECT** Visual Arts, Aboriginal Language,  
Human Society and Its Environment

**CONTENT** Making, Appreciating  
VAS3.1, VAS3.2, VAS3.3, VAS3.4  
Using Language  
3.UL.3, 3.UL.4  
Making Linguistic Connections  
3.MLC.1, 3.MCL.2  
Moving Between Cultures  
3.MBC.1, 3.MBC.2

The Home Program is a collaboration between the Art Gallery of New South Wales, NSW Department of Education's Arts Unit, Wiradjuri community at Wagga Wagga and Aboriginal communities and regional galleries across NSW. It connects schools to local Aboriginal artists, community, language and culture. Over the school year, students and teachers will participate in workshops, virtual excursions, and a teaching and learning program that culminates in an exhibition at BRAG.





*Tree branch loom weaving made by students at BRAG for Home, 2023, recycled and reclaimed fabric, yarn, and found branches, dimensions variable. Photo: Joel Tonks*

**DATE & TIME** | Term 1, 2, 3, 4 as negotiated

**VENUE** | Bathurst Regional Art Gallery

**DURATION** | 1 year learning program

**SUITABILITY** | Stage 3

**CONTACT** | EOIs are sent out to schools in 2023 by the Arts Unit



# ALL YEAR ART IN A SUITCASE

*Art in a Suitcase* is an 'exhibition in a box' program available for schools to loan for periods of up to three weeks. A BRAG initiative, the travel crate contains a range of commissioned artworks that were specifically designed to be handled. Explore a range of sculptures made from bronze, glass, ceramic, steel, wood, and even echidna spines! The crate also contains an education kit with information about the artists and artworks, activities, and further research ideas.

## CURRICULUM LINKS

### EARLY STAGE 1

---

**SUBJECT** Visual Arts

---

**CONTENT** Making, Appreciating  
VAES1.1, VAES1.2, VAES1.3, VAES1.4

---

### STAGE 1

---

**SUBJECT** Visual Arts

---

**CONTENT** Making, Appreciating  
VAS1.1, VAS1.2, VAS1.3, VAS1.4

---

### STAGE 2

---

**SUBJECT** Visual Arts

---

**CONTENT** Making, Appreciating  
VAS2.1, VAS2.2, VAS2.3, VAS2.4

---

### STAGE 3

---

**SUBJECT** Visual Arts

---

**CONTENT** Making, Appreciating  
VAS3.1, VAS3.2, VAS3.3, VAS3.4

---



*Lionel Bawden, The Pleasure is all mine, 2008, Staedtler pencils, epoxy and linseed oil. Photo courtesy the artist.*

**DATE & TIME** | Term 1, 2, 3, 4 as negotiated

**VENUE** | Your school but material supplied by Bathurst Regional Art Gallery

**DURATION** | Up to 3 weeks

**SUITABILITY** | Early Stage 1 – Stage 3

**COST** | \$25 administration fee

**BOOKINGS** | BRAG Audience Engagement Officer:  
02 6333 6151  
[brag@bathurst.nsw.gov.au](mailto:brag@bathurst.nsw.gov.au)

# ALL YEAR AUSTRALIAN FOSSIL AND MINERAL MUSEUM

From diamonds to dinosaurs, learn about the material world and living world through this spectacular collection of fossils and minerals. The Australian Fossil and Mineral Museum is the home of the internationally renowned Somerville Collection, the lifetime work of Professor Warren Somerville.

The museum offers a range of museum guided and teacher led options for students to:

- Explore the natural history of our planet
- See Australia's most complete Tyrannosaurus rex skeleton
- Learn about gold, minerals and their uses and Earth's structure
- Discover the geological timeline, history of life on Earth, dinosaurs and scientifically significant fossils.

Tours can be guided by an educator or self-guided, and can be tailored to your specific requirements; if you would like a particular topic covered or focus on a specific time period or geographic area, please let us know.

*First session commences 9am.*

*Last session commences 2.30pm.*

## CURRICULUM LINKS

### STAGE 1

**SUBJECT** Science

**CONTENT** Working Scientifically, Physical World, Living World (Fossils Evidence)  
ST1-4WS, ST1-8ES, ST1-9ES, ST1-10LW, ST1-11LW, ST1-16P

### STAGE 2

**SUBJECT** Science

**CONTENT** Working Scientifically, Living World, Material World  
ST2-4WS, ST2-5WT ST2-8ES, ST2-10LW, ST2-13MW, ST2-16P

### STAGE 3

**SUBJECT** Science

**CONTENT** Working Scientifically, Earth and Space  
ST3-4WS, ST3-9ES, ST3-10LW, ST3-13MW

### STAGE 5

**SUBJECT** Science

**CONTENT** Working Scientifically, Conducting Investigations, Communicating, Earth and Space  
SC5-6WS, SC5-7WS, SC5-9WS, SC5-12ES, SC5-15LW

### STAGE 6

**SUBJECT** Earth & Environmental Science

**CONTENT** EES11-8 – EES11-11,  
EES12-12 – EES12-15







**DATE & TIME** | Terms 1, 2, 3 & 4,  
Monday, Tuesday, Thursday & Friday

**VENUE** | Australian Fossil & Mineral Museum

**DURATION** | 1 hour

**SUITABILITY** | Stages 1, 2, 3, 5 & 6

**COST** | Guided \$7 per student, Self-Guided \$5  
per student. Minimum of 10 students.

**RATIO** | Stages 1 – 3: 1 free  
teacher/10 students,  
Stage 5 – 6: 1 free teacher/  
15 students

**BOOKINGS** | [museumbathurst.com.au/learn](http://museumbathurst.com.au/learn)  
[museums@bathurst.nsw.gov.au](mailto:museums@bathurst.nsw.gov.au)  
or 02 6333 6522

# ALL YEAR CHIFLEY HOME & EDUCATION CENTRE

Chifley Home is the home of Prime Minister Ben Chifley and his wife, Elizabeth. Preserved in its original state, the house is a time capsule of life in the 1940s and is a testament to the hardships of the Great Depression, followed by wartime rationing and restrictions which dictated how people lived.

The house contains the Chifleys original household furnishings, Prime Ministerial mementos and personal effects from 1914 to 1961.

Our Learning Program aims to extend the understanding and enjoyment of the collections, exhibitions and events at Chifley Home and Education Centre.

The Chifley Home and Education Centre's learning programs are based around the investigation of the Museum's unique stories and objects and have been developed to support the Australian Curriculum. The Museum provides syllabus linked education programs for students from K-12.

*First session commences 11am.*

*Last session commences 2pm.*

## CURRICULUM LINKS

### STAGE 1

**SUBJECT** History

**CONTENT** Present and Past Family Life,  
The Past in the Present  
HT1-1, HT1-2, HT1-3, HT1-4

### STAGE 2

**SUBJECT** History

**CONTENT** Community and Remembrance  
HT2-2, HT2-5

### STAGE 3

**SUBJECT** History

**CONTENT** Australia as a Nation  
HT2-2, HT2-5

### STAGE 4 & 5

**SUBJECT** History

**CONTENT** Depth Study 3 Australians at War,  
Topic 5C Migration experiences  
HT4-1, HT4-5, HT4-6, HT4-8, HT4-9,  
HT4-10, HT5-1, HT5-2, HT5-4, HT5-6,  
HT5-7, HT5-9, HT5-10







## BECOMING PRIME MINISTER

Ben Chifley returned and was successful in winning the former Federal electorate of Mangrove in 1945, and so he was once more off to Canberra after a nine-year gap since losing the seat in 1935. 111 Roxby Street had returned to being the home of a Federal politician.

When the Labor Party gained government in 1949, with John Curtin as prime minister, Chifley was appointed Australia's Treasurer. The following year, Curtin made him the Minister for Post-war Reconstruction. Against the backdrop of World War Two and with two years' experience, the responsibilities and workload for Ben would have been enormous, as it had the government and Ben Chifley would have almost have "supervised" 111 Roxby Street since Ben was home. In his last days, particularly when Ben a Federal politician, Chifley used to come back to Roxby Street every second weekend to Canberra to see at the house during which with a chair about from Parliament House.

John Curtin died on 7 July 1961 and eight days later on 13 July, Ben Chifley became Australia's 16th prime minister. While the use of a Curlew rose and the Minister of State was under way, Chifley and Australia were about to enter a time of peace and post-war reconstruction.

## CALM AND COLLECTED

He usually arrives at his office before his staff and seldom leaves before midnight. In the House he dominates, as an able and strong debater. His tall figure is slightly stooping, and with arms folded he puts a case from which no relevant detail is omitted.



**DATE & TIME** | Terms 1, 2, 3 & 4  
Monday, Tuesday, Wednesday & Friday

**VENUE** | Chifley Home & Education Centre

**DURATION** | 1 hour

**SUITABILITY** | Stages 1, 2, 3, 4 & 5

**COST** | Guided \$7 per student.  
Minimum of 10 students.

**RATIO** | Stages 1 – 3: 1 free teacher/10 students,  
Stages 4 – 5: 1 free teacher/15 students

**BOOKINGS** | [museumbathurst.com.au/learn](http://museumbathurst.com.au/learn)  
[museums@bathurst.nsw.gov.au](mailto:museums@bathurst.nsw.gov.au)  
or 02 6333 6522



# ALL YEAR BATHURST RAIL MUSEUM

The Bathurst Rail Museum brings the rich social history of Bathurst and its story as a railway town to life with personal recollections, unique artefacts and a journey through the development of the railway in New South Wales.

The Museum includes the largest public model train layout in Australia, depicting the Great Western Line between Tarana and Bathurst. Working locomotives illuminate this remarkably influential inland train system and the community it serves to this day.

The Bathurst Rail Museum learning programs are based around the investigation of the Museum's unique stories and objects and have been developed to support the Australian Curriculum. The Museum provides syllabus linked education programs for students from K-12.

*First session commences 9am.  
Last session commences 2pm.*

## CURRICULUM LINKS

### EARLY STAGE 1

---

**SUBJECT** History

**CONTENT** Personal and Family Histories  
HTe-1, HTe-2

---

### STAGE 1

---

**SUBJECT** History

**CONTENT** Present and Past Family Life,  
The Past in the Present  
HT1-1, HT1-2, HT1-3, HT1-4

---

### STAGE 2

---

**SUBJECT** History

**CONTENT** Community and Remembrance  
HT2-2, HT2-5

---

### STAGE 3

---

**SUBJECT** History

**CONTENT** The Australian Colonies  
HT3-1, HT3-2, HT 3-3, HT 3-5

---

### STAGE 5

---

**SUBJECT** History

**CONTENT** Depth Study 3 Australians at War,  
Topic 5C Migration experiences  
HT5-1, HT5-2, HT5-4, HT5-6, HT5-7,  
HT5-9, HT5-10

---





**DATE & TIME** | Terms 1, 2, 3 & 4  
Monday, Tuesday, Wednesday & Friday

**VENUE** | Bathurst Rail Museum

**DURATION** | 1 hour

**SUITABILITY** | Stages ES1, 1, 2, 3 & 5

**COST** | Guided \$7 per student,  
Minimum of 10 students.

**RATIO** | Stages 1 – 3: 1 free teacher/  
10 students, Stages 4 – 5:  
1 free teacher/15 students

**BOOKINGS** | [museumbathurst.com.au/learn](http://museumbathurst.com.au/learn)  
[museums@bathurst.nsw.gov.au](mailto:museums@bathurst.nsw.gov.au)  
or 02 6333 6522

# ALL YEAR NATIONAL MOTOR RACING MUSEUM

Celebrate Australian Motor Sport and get up close to an ever-changing line-up of racing cars and motorbikes.

Our Learning Program aims to extend the understanding and enjoyment of the collections, exhibitions and events.

The National Motor Racing Museum learning programs are based around the investigation of the Museum's unique stories and objects and have been developed to support the Australian Curriculum. The Museum provides syllabus linked education programs for students from K-12.

*First session commences 9am.*

*Last session commences 2:30pm.*

## CURRICULUM LINKS EARLY STAGE 1

**SUBJECT** Science & Technology

**CONTENT** Physical World, Material World  
STe-5PW-ST, STe-4MW-ST

## STAGE 1

**SUBJECT** Science & Technology, History

**CONTENT** Physical World, Material World,  
The Past in the Present  
ST1-9PW-ST, ST1-7MW-T, HT1-2,  
HT1-3, HT1-4

## STAGE 2

**SUBJECT** Science & Technology, History

**CONTENT** Physical World, Material World,  
The Past in the Present,  
Community and Remembrance  
ST2-9PW-ST, ST2-7MW-T, HT2-2,  
HT2-5

## STAGE 3

**SUBJECT** Science & Technology

**CONTENT** Physical World, Material World  
ST3-9PW-ST, ST3-7MW-T

## STAGE 4

**SUBJECT** Science

**CONTENT** Physical World  
SC4-10PW, SC4-11PW, SC4-11PW

## STAGE 5

**SUBJECT** Science, Industrial Technology –  
Automotive

**CONTENT** Physical World, Power Sources,  
Engine and related systems,  
Chassis and related components,  
Links to Industry, Design  
SC5-10PW, SC5-11PW, 5.3.1, 5.3.2, 5.5,  
5.5.1, 5.6.1, 5.7.2





## STAGE 6 – PRELIMINARY COURSE

**SUBJECT** Engineering Studies

**CONTENT** Engineering application module 3:  
Braking systems  
P2.1, P4.1, P4.2, P4.3

## STAGE 6 – HSC

**SUBJECT** Textiles and Designs

**CONTENT** Properties and performance of  
textiles  
H3.2



**DATE & TIME** | Terms 1, 2, 3 & 4  
Monday, Wednesday, Thursday & Friday

**VENUE** | National Motor Racing Museum

**DURATION** | 1 hour

**SUITABILITY** | Stages ES1, 1, 2, 3, 4, 5 & 6

**COST** | Self-Guided \$5 per student,  
Minimum of 10 students

**RATIO** | Stages 1 – 3: 1 free teacher/  
10 students, Stages 4 – 6:  
1 free teacher/15 students

**BOOKINGS** | [museumbathurst.com.au/learn](http://museumbathurst.com.au/learn)  
[museums@bathurst.nsw.gov.au](mailto:museums@bathurst.nsw.gov.au)  
or 02 6333 6522



# TERM 1

AUSTRALIAN HAYDN  
ENSEMBLE:

## CLASSICAL INFLUENCERS

Strings Quartets of Haydn,  
Mozart and Mendelssohn

Experience the hidden treasures at the heart of the music of Haydn, Mozart and Mendelssohn's string quartets, in this inspiring and educational performance by principal artists of the renowned Australian Haydn Ensemble, leading exponents of historically informed performance.

This is an interactive workshop designed for aspiring musicians to hear the concepts of music in action and explore historical instruments up close, with detailed demonstrations, unpacking the building blocks of music, and an exploration of the sound world of the composers as they were in their own times.

Presented by Artistic Director Skye McIntosh, *Classical Influencers* will unlock the secrets of timeless compositions about love and dedication, sparking a lifelong appreciation for the art of music in young people.

- HAYDN String Quartet Op. 20 No. 4 in D Major
- MOZART String Quartet in D minor
- MENDELSSOHN String Quartet Op. 12 in E flat major

## CURRICULUM LINKS

### STAGE 5

SUBJECT Music

CONTENT Listening  
5.7, 5.8, 5.9

### STAGE 6

SUBJECT Music 1

CONTENT Preliminary, HSC  
P4, P5, P6, H4, H5, H6

### STAGE 6

SUBJECT Music 2

CONTENT Preliminary, HSC  
P2, P5, P6, P7, H2, H5, H6, H7

**BEN GELIN** OAM  
SOLICITOR

*This event has been made possible by the generosity of Ben Gelin.  
BMEC thanks him for his support of classical music and young people.*





**DATE & TIME** | Wednesday 14 February at 11:30am

**VENUE** | Bathurst Memorial  
Entertainment Centre

**DURATION** | 1 hour 30 minutes

**SUITABILITY** | Stages 5 and 6 Elective  
Music Students

**COST** | \$27 per student. 1 free  
teacher/20 students

**BOOKINGS** | [bmec.com.au/education](http://bmec.com.au/education)

# TERM 1

EXHIBITION:

# DEBORAH KELLY: CREATION

Education Visits are a tailored experience for your class group and include a guided tour of the current exhibition and pre-visit, in-gallery, and post-visit activities hosted by our professional gallery staff.

*CREATION* is a queer insurrectionary science fiction climate change 'religion', unfurling through years of collaborations across generations, identities, artforms and sites. The work manifests in human encounters; through exhibitions, performances and public workshops. It celebrates how we might create together, accept one another, and build our futures collectively.

## CURRICULUM LINKS

### EARLY STAGE 1

**SUBJECT** Visual Arts

**CONTENT** Making, Appreciating  
VAES1.1, VAES1.2, VAES1.3, VAES1.4

### STAGE 1

**SUBJECT** Visual Arts

**CONTENT** Making, Appreciating  
VAS1.1, VAS1.2, VAS1.3, VAS1.4

### STAGE 2

**SUBJECT** Visual Arts

**CONTENT** Making, Appreciating  
VAS2.1, VAS2.2, VAS2.3, VAS2.4

### STAGE 3

**SUBJECT** Visual Arts

**CONTENT** Making, Appreciating  
VAS3.1, VAS3.2, VAS3.3, VAS3.4

### STAGE 4

**SUBJECT** Visual Arts

**CONTENT** Artmaking, Critical and Historical  
Studies  
4.1, 4.2, 4.3, 4.4, 4.5, 4.6, 4.7, 4.8, 4.9,  
4.10

### STAGE 5

**SUBJECT** Visual Arts

**CONTENT** Artmaking, Critical and Historical  
Studies  
5.1, 5.2, 5.3, 5.4, 5.5, 5.6, 5.7, 5.8, 5.9, 5.10

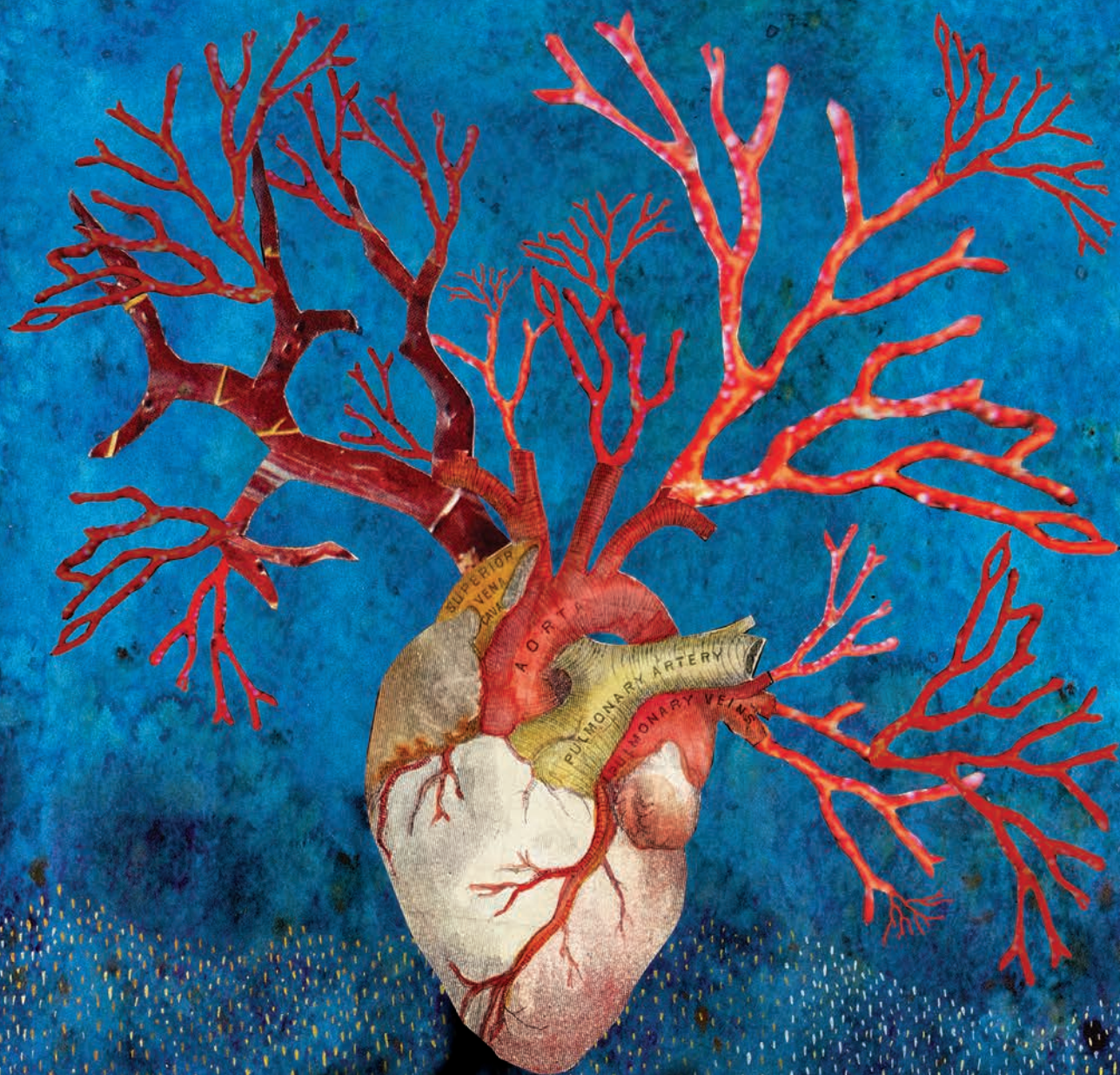
### STAGE 6

**SUBJECT** Visual Arts

**CONTENT** Artmaking, Art Criticism and Art  
History  
P1, P2, P3, P4, P5, P6, H1, H2, H3, H4,  
H5, H6, P7, P8, P9, P10, H7, H8, H9,  
H10



Deborah Kelly, *For Creation (detail)*, 2020. Animation from analogue collage on cotton paper. Courtesy the artist.



**DATE & TIME** | Tuesdays – Fridays,  
24 February – 21 April, 10am – 5pm

**VENUE** | Bathurst Regional Art Gallery

**DURATION** | 1 – 1.5 hours

**SUITABILITY** | Early Stage 1 – Stage 6

**COST** | \$10pp or \$8.50pp for 25+  
students, Stages 1 – 4: 1 free  
teacher/10 students, Stage  
5 – 6: 1 free teacher/15 students

**BOOKINGS** | BRAC Audience Engagement  
Officer: 02 6333 6151  
brag@bathurst.nsw.gov.au



# TERM 1

BMEC PRESENTS A  
SHOCK THERAPY  
ARTS PRODUCTION

## MEDEA

By Euripides. Devised and  
directed by Sam Foster  
and Hayden Jones

This stylised *Medea* combines Greek Tragedy, Epic and Physical Theatre to deliver a gripping experience with a thumping soundtrack.

Award-winning Queensland performance makers Shock Therapy Arts put their signature touch on this timely Greek Classic. One of the great plays of the Western Canon, this psychological thriller follows the story of Medea, as the pressures of court politics, family, and discrimination within the patriarchy start to unravel her world. Themes that are, unfortunately, just as relevant today.

Medea is a former barbarian princess who left her world behind for the man she loves. When she learns that her husband Jason, leader of the Argonauts, is planning to leave her to marry Glauce, the Greek Princess of Corinth, her love and passion turns to blind rage. With her place in Greek society already under threat, Medea is then banished into exile. This devastating betrayal drives Medea to plot a shocking and calculated revenge on Jason and take back control in a society ruled by men.

## CURRICULUM LINKS SUMMARY

See website for full details.

### STAGE 4

**SUBJECT** Drama

**CONTENT** Dramatic Forms and Performance Styles: Greek Drama  
Making 4.1.1, Performing 4.2.3, Appreciating 4.3.1, 4.3.2

**SUBJECT** English

**CONTENT** Text type: Drama  
EN4-URA-01, EN4-URB-01

### STAGE 5

**SUBJECT** Drama

**CONTENT** Dramatic Forms and Performance Styles: Greek Drama  
Making 4.1.1, Performing 4.2.3, Appreciating 4.3.1, 4.3.2

**SUBJECT** English

**CONTENT** Text type: Drama  
EN5-RVL-01, EN5-URA-01,  
EN5-URB-01, EN5-URC-01

**SUBJECT** History

**CONTENT** Topic 2: Ancient, Medieval and Modern Societies  
HTE5-2, HTE5-4, HTE5-7, HTE5-8

### STAGE 6 PRELIMINARY

**SUBJECT** Drama

**CONTENT** Theatrical Traditions and Performance Styles: Greek Drama  
Making P1.2, P1.3 Performing P2.1, P2.2, P2.6, Critically Studying P3.2.2



Shock Therapy Arts is proudly supported by the City of Gold Coast.

**GOLDCOAST**



<b>SUBJECT</b>	English – Standard
<b>CONTENT</b>	Module B: Close Study of Literature (Drama/ Prose – Medea) EN11-1, EN11-2, EN11-3, EN11-4, EN11-5, EN11-6, EN11-7, EN11-8
<b>SUBJECT</b>	English – Advanced
<b>CONTENT</b>	Module A: Narratives that Shape our World EA11-1, EA11-2, EA11-3, EA11-4, EA11-5, EA11-6, EA11-7, EA11-8
<b>SUBJECT</b>	Ancient History
<b>CONTENT</b>	Investigating Ancient History – Case Studies: Greek Drama AH11-1, AH11-3, AH11-5, AH11-6

## STAGE 6 HSC

<b>SUBJECT</b>	English – Standard
<b>CONTENT</b>	Common Module: Texts and Human Experiences (related text); Module A: Language, Identity and Culture (related text), Drama text EN12-1, EN12-2, EN12-3, EN12-5, EN12-6, EN12-7, EN12-8
<b>SUBJECT</b>	English – Advanced
<b>CONTENT</b>	Common Module: Texts and Human Experiences (related text) EA12-1, EA12-2, EA12-3, EA12-5, EA12-6, EA12-7, EA12-8



**DATE & TIME** | Monday 8 April at 11am  
**VENUE** | Bathurst Memorial Entertainment Centre  
**DURATION** | 1 hour

**SUITABILITY** | Stages 4, 5 and 6  
**COST** | \$27 per student. 1 free teacher/20 students  
**BOOKINGS** | [bmec.com.au/education](http://bmec.com.au/education)



# TERM 2

## EXHIBITIONS

# SARA MORAWETZ: ÉTALON + A LAND FOR THE LIVING

Education Visits are a tailored experience for your class group and include a guided tour of the current exhibition and pre-visit, in-gallery, and post-visit activities hosted by our professional gallery staff.

### *Étalon*

US based Australian artist Sara Morawetz presents her major solo exhibition *Étalon* at BRAG in 2024. The project was devised in 2018 as an encounter with the metre as a physical, emotional and conceptual proposition, experienced over an expansive terrain. A durational action of walking for 112 days, over 2,108.7 km, from the northern coast of France to the Southernmost tip of Spain, each step was an act of (re)evaluation and (re)consideration of the male dominated early scientific community – examining the lived action of measurement and scientific exploration through the female gaze as the artist was accompanied by several female artists and curators over the course the project.

### *A Land for the Living*

A world of wonder, magic, and leaps of imagination – may be just what it takes to reimagine the future together! Artists of *A Land for the Living*, explore the terrestrial plane of our planet through the lens of science fictions, fabulisms, and futurisms, presenting the land

back to itself reimagined. Yet wild conceits, from alienesque soy laboratories to humming mounds of dirt, expose more fully in their fictional nature certain truths about climate change and how we will need to engage with the beauty and magic of life of Earth if we are to preserve it.

*Optional Education Kits available for purchase upon enquiry.*

## CURRICULUM LINKS

### EARLY STAGE 1

**SUBJECT** Visual Arts

**CONTENT** Making, Appreciating  
VAES1.1, VAES1.2, VAES1.3, VAES1.4

### STAGE 1

**SUBJECT** Visual Arts

**CONTENT** Making, Appreciating  
VAS1.1, VAS1.2, VAS1.3, VAS1.4

### STAGE 2

**SUBJECT** Visual Arts

**CONTENT** Making, Appreciating  
VAS2.1, VAS2.2, VAS2.3, VAS2.4

### STAGE 3

**SUBJECT** Visual Arts

**CONTENT** Making, Appreciating  
VAS3.1, VAS3.2, VAS3.3, VAS3.4

### STAGE 4

**SUBJECT** Visual Arts

**CONTENT** Artmaking, Critical and Historical  
Studies 4.1, 4.2, 4.3, 4.4, 4.5, 4.6, 4.7,  
4.8, 4.9, 4.10



## STAGE 5

**SUBJECT** Visual Arts

**CONTENT** Artmaking, Critical and Historical Studies 5.1, 5.2, 5.3, 5.4, 5.5, 5.6, 5.7, 5.8, 5.9, 5.10

## STAGE 6

**SUBJECT** Visual Arts

**CONTENT** Artmaking, Art Criticism and Art History P1, P2, P3, P4, P5, P6, H1, H2, H3, H4, H5, H6, P7, P8, P9, P10, H7, H8, H9, H10



*Installation view, A Leakage of Wholes, Firstdraft, Sydney, 3 February – 19 March 2023, Betty Russ, found organic objects, PVC, tubing, reusable cable ties, steel, soy-milk, chlorophyll, H2O, sound. Courtesy the artist. Photo: Jessica Maurer.*

**DATE & TIME** | Tuesday – Friday  
4 May – 23 June, 10am – 5pm

**VENUE** | Bathurst Regional Art Gallery

**DURATION** | 1 – 1.5 hours

**SUITABILITY** | Early Stage 1 – Stage 6

**COST** | \$10pp or \$8.50pp for 25+ students, Stages 1 – 4: 1 free teacher/10 students, Stage 5 – 6: 1 free teacher/15 students

**BOOKINGS** | BRAG Audience Engagement Officer: 02 6333 6151  
brag@bathurst.nsw.gov.au

# TERM 2

THAT SCIENCE GANG

# YOU ARE A DOUGHNUT

From the creators of the multi-award-winning *The Alphabet of Awesome Science* comes a brand new biological-musical-comedy-adventure that explores the ins and outs of the human digestive system.

YOU are a doughnut! It's true! YOU are a great big fleshy lump with a remarkable hole running all the way through your middle — your digestive system.

Join biology teachers Oesoph A. Gus and Dewey Dean as they embark upon an utterly brilliant all-singing, all-dancing (and all-clowning!) exploration of every twisting tube and remarkable organ — with sketches, songs, and sensational science. Along the way you'll encounter a frenzy of enzyme – powered ping pong balls, sing along with a rainbow collection of poop puppets, and witness the weirdest poetry performance you've ever seen.

It's a fast-paced variety hour, with each new digestive destination inspiring a wonderfully unusual performance. It's little bit gross – and a 'hole' lot of fun! You might even learn something!

*Also performing at Orange Civic Theatre 8 April at 6pm, April 9 at 10am and 12:30pm.  
Call 02 6393 8112 to book.*

## CURRICULUM LINKS

### STAGE 1

<b>SUBJECT</b>	Science
<b>CONTENT</b>	Understanding Living things have a variety of external features ACSSU017. Different materials can be combined for a particular purpose ACSSU031. Living things grow, change and have offspring similar to themselves ACSSU030.

### STAGE 2

<b>SUBJECT</b>	Science
<b>CONTENT</b>	Understanding Living things can be grouped on the basis of observable features and can be distinguished from non-living things ACSSU044. Living things depend on each other and the environment to survive ACSSU073.

### STAGE 3

<b>SUBJECT</b>	Science
<b>CONTENT</b>	Understanding Solids, liquids and gases have different observable properties and behave in different ways ACSSU077. Changes to materials can be reversible or irreversible ACSSU095.

Biological Sciences, Science Understanding, Chemical Sciences, Physical Science, Living World, Material World, Critical and Creative Thinking.

**That  
Science!  
Gang!**

**NCM**

**BMEC**  
BATHURST MEMORIAL  
ENTERTAINMENT CENTRE

**NSW**  
GOVERNMENT

  
BATHURST  
REGIONAL  
COUNCIL





**DATE & TIME** | Thursday 9 May at 10am and noon

**VENUE** | Bathurst Memorial  
Entertainment Centre

**DURATION** | 1 hour

**SUITABILITY** | Stages 1, 2 and 3

**COST** | \$22 per student. 1 free  
teacher/15 students

**BOOKINGS** | [bmec.com.au/education](http://bmec.com.au/education)

# TERM 2

# THE TROJAN WAR

Created by  
A Slightly Isolated Dog

This is a masterclass in taking a topic that might send the most engaged student to sleep, and turns it into an hilarious, much talked of lesson in group devised work, comedy, slapstick, clowning and joyous theatre making!

Five flirtatious “French” performers meet you at the door. They bring you in, they show you to your seat, they flirt with you. Maybe they fall a little bit in love with you. Then they tell the story – with you.

Like a wild dress-up party, this show combines theatrical magic, twisted pop songs and explosive wit. The most charming performers you can hope to meet play a revolving repertoire of outrageous characters.

Created and performed by A Slightly Isolated Dog, this New Zealand theatre company delivers a frantic and hilarious mash-up in the style of Python meets The Mighty Boosh. Leave your inhibitions at the door and play.

## CURRICULUM LINKS

### STAGE 5

**SUBJECT** Drama

**CONTENT** Making, Performing, Appreciating, Dramatic Contexts: Improvisation, Physical Theatre, Clowning/ Comedy  
5.1.1, 5.1.2, 5.1.3, 5.1.4, 5.2.1, 5.2.2, 5.2.3, 5.3.1, 5.3.2, 5.3.3

### STAGE 6

**SUBJECT** Drama

**CONTENT** Making, Performing, Critically Studying  
P1.7, P1.8, H1.8, H1.9, P2.1, P2.5, P2.6, H2.2, H2.4, H2.5, P3.1, P3.2, P3.3, P3.4, H3.1, H3.2, H3.3, H3.4, H3.5  
Improvisation, Playbuilding and Acting, Elements of Production in Performance, Theatrical Traditions and Performance Styles: Preliminary Outcomes  
Group Performance: Preliminary Outcomes



**NCM**

ARTS COUNCIL  
NEW ZEALAND TOI AOTEAROA  
**creative**nz

*The Trojan War was created with support from Creative New Zealand.*







**DATE & TIME** | Friday 17 May at 1pm  
*General public performances*  
Friday 17 May at 7:30pm and  
Saturday 18 May at 7:30pm.

**VENUE** | Bathurst Memorial  
Entertainment Centre

**DURATION** | 60 minutes plus Q&A  
**SUITABILITY** | Stages 5 and 6 but could  
be enjoyed by Stage 4

**COST** | \$27 per student. 1 free  
teacher/20 students

**BOOKINGS** | [bmec.com.au/education](http://bmec.com.au/education)

# TERM 2

BATHURST WRITERS' &  
READERS' FESTIVAL PRESENTS

**SECONDARY SCHOOLS**

# CREATIVE WRITING WORKSHOPS

An incredible opportunity to spend a full day accessing some of the best Australian Young Adult authors for potential young authors of the future. Suitable for students in years 10, 11 and 12, these workshops are not HSC or curriculum based but focused on the creative writing process with ample opportunity for students to write during the workshops. The focus is for students to have the opportunity to be immersed in the writing process. The aim is for students to write, under direction, with authors also sharing suggestions about the writing process. It is a chance for students to be creative for creativity's sake, and to explore the potential for creative writing to assist in numerous vocations and creative fields. The authors conduct 2 workshops during the day, with an hour's lunch break in between.

Due to popular demand, we are running this event for two days in 2024 to allow for more students to take part. Author names will be released closer to the dates.

*Capacity is strictly limited.*







**DATE & TIME** | Monday 20 May at 9am,  
Tuesday 21 May at 9am

**VENUE** | Bathurst Memorial  
Entertainment Centre

**DURATION** | 6 hours including breaks

**SUITABILITY** | Stages 5 and 6

**COST** | \$30 per student  
2 teachers/school

**BOOKINGS** | [bmec.com.au/education](http://bmec.com.au/education)



# TERM 2

BATHURST WRITERS' &  
READERS' FESTIVAL  
A SHAKE & STIR THEATRE  
CO PRODUCTION

## FOURTEEN

By Shannon Molloy  
Adapted by Shake & Stir  
with Shannon Molloy

The year is 1999 and Shannon has a secret.

Shannon Molloy is a year 9 student at an all-boys rugby-mad Catholic school in regional Queensland, with a secret that no one can ever find out.

Based on the best-selling memoir by award-winning journalist Shannon Molloy, *Fourteen* is the inspirational true story of growing up gay in regional Australia (it could be Bathurst!), transformed into a powerful must-see theatre production by nationally acclaimed Shake & Stir Theatre Co.

Set to a nostalgic mixtape of 90s bangers from all your faves, from Shania Twain to The Spice Girls, *Fourteen* addresses the trials and tribulations of growing up with honesty, humour, and heart. Equal parts uplifting and heart wrenching, we follow Shannon in a year of self-discovery set amidst a backdrop of torment, bullying and betrayal – not just at the hands of his peers, but by the adults who were meant to protect him.

This moving coming-of-age memoir about adversity and tragedy is also a story of resilience, hope and hilarity – thanks to the love of a group

of close-knit friends, a fiercely protective family, an extraordinary mother and... S Club 7.

Also performing at Orange Civic Theatre 6 June at 11am and 7:30pm. Call 02 6393 8112 to book.

## CURRICULUM LINKS SUMMARY

See website for full details.

### STAGE 5

**SUBJECT** Drama

**CONTENT** Dramatic Forms and Styles: Autobiographical Theatre, Verbatim Theatre, Magical Realism Making 5.1.1, 5.1.4, Performing 5.2.2, 5.2.3, Appreciating 5.3.1, 5.3.2, 5.3.3

**SUBJECT** English

**CONTENT** Text type: Drama; Autobiography, a range of texts by Australian authors, a range of cultural, social and gender perspectives, including from popular and youth cultures EN5-RVL-01, EN5-URA-01, EN5-URB-01, EN5-URC-01

### STAGE 6 PRELIMINARY

**SUBJECT** Drama

**CONTENT** Theatrical Traditions and Performance Styles: Autobiographical Theatre, Verbatim Theatre, Magical Realism Performing P2.2, P2.6, Critically Studying P3.2, P3.3, P3.4

**SUBJECT** English – Standard

**CONTENT** Module B: Close Study of Literature – Autobiography EN11-1, EN11-2, EN11-3, EN11-4, EN11-5, EN11-6, EN11-7, EN11-8

**SHAKE  
& STIR**  
THEATRE CO

  
Australian Government

  
QUEENSLAND  
PERFORMING  
ARTS CENTRE

  
Creative  
Australia

  
BATHURST MEMORIAL  
ENTERTAINMENT CENTRE

  
NSW  
GOVERNMENT

  
BATHURST  
REGIONAL  
COUNCIL

This project is supported by the Queensland Government through Arts Queensland.  
Originally co-produced with QPAC and Brisbane Festival.

---

**SUBJECT** English – Advanced

---

**CONTENT** Module A: Narratives that Shape our World  
EA11-1, EA11-2, EA11-5, EA11-6, EA11-7, EA11-8

---

## STAGE 6 HSC

---

**SUBJECT** Drama

---

**CONTENT** Australian Drama and Theatre: Contemporary Australian Theatre Practice. (topic relevance – not prescribed text), Topic 5: Verbatim Theatre (topic relevance – not prescribed text)  
Making H1.3, Performing H2.2, H2.4, Critically Studying H3.1, H3.3, H3.5

---

---

**SUBJECT** English – Standard

---

**CONTENT** Common Module: Texts and Human Experiences (related text);  
Module A: Language, Identity and Culture (related text)  
EN12-1, EN12-2, EN12-3, EN12-5, EN12-6, EN12-7, EN12-8

---

**SUBJECT** English – Advanced

---

**CONTENT** Common Module: Texts and Human Experiences (related text)  
EA12-1, EA12-2, EA12-3, EA12-4, EA12-5, EA12-6, EA12-7, EA12-8

---

*This play contains strong coarse language, mature themes, simulated violence, depictions of self-harm and suicide ideation, and sexual abuse. It also contains strobe lighting, theatrical smoke effects, and the use of stage cigarettes.*

*“Funny, sad and true, this is a play that will foster conversation, and save lives.” The Australian*

*Photo by Dylan Evans*

**DATE & TIME** | Wednesday 22 May at 11am  
General public performance  
Tuesday 21 May at 7:30pm.

**VENUE** | Bathurst Memorial  
Entertainment Centre

**DURATION** | 90 minutes plus Q&A

**SUITABILITY** | Stages 5 and 6 but could be enjoyed by Stage 4

**COST** | \$27 per student. 1 free teacher/20 students

**BOOKINGS** | [bmec.com.au/education](http://bmec.com.au/education)

# TERM 2

# SHARP

# SHORT

# STORY

Individuals who enter the competition will participate in a performance workshop with an industry professional, a rehearsal of their storytelling performance before performing in front of a live audience.

## CURRICULUM LINKS

Depending on how your school engages with this activity, *Sharp Short Story* can link with English and Drama in different ways for Stages 3 – 6.

Humans have been sharing stories with one another for forever. The kind of stories we have told have taken many forms full of imagination and creativity. As storytelling is a performance, *Sharp Short Story* aims to encourage not only the writing of new stories but also the theatrical presentation of those stories.

Students in Stages 3 – 6 are asked to write a story to be performed for an audience. It should be between 4 and 6 minutes long, performed by memory. While adults may help guide the writing process and performance, the work should be purely of the individual young writer/performer. Students should think about the shape of their story, dramatic tension, how it engages an audience, performance techniques, use of voice, pace and dynamics. The story should entertain.

We suggest that schools hold their own *Sharp Short Story* competitions as a heat and then enter your best students into the *Sharp Short Story* competition at BMEC which will be part of the Bathurst Writers' & Readers' Festival. Prizes will be awarded by a panel of industry experts with future opportunities for storytelling performances in the future.







**DATE & TIME** | Entries close 5pm, Friday 3 May, 2024. Workshop and rehearsal 10am – 3pm, Performance Thursday 23 May at 6:30pm

**VENUE** | Bathurst Memorial Entertainment Centre

**SUITABILITY** | Stages 3, 4, 5 and 6

**DURATION** | Workshop and rehearsal 5 hours including a 30 minute break, Performance TBC

**COST** | Registration \$25 per student for entries, Performance \$10pp

**REGISTRATION** | [bmec.com.au/education](http://bmec.com.au/education)

# TERM 2

BMEC AND RIVERSIDE  
THEATRES PRESENT

# SHARP SHORT THEATRE

*Sharp Short Theatre* is Riverside Theatres' popular youth short play competition.

Now entering its 9th year, and expanding to include its first regional heat, *Sharp Short Theatre* has grown into a much-loved annual highlight for many schools and students across the state.

Students 18 years and under must be the writers, directors, and performers of all the works which will be performed in a heat at BMEC under the guidance of professional mentors and technicians. The best pieces, as selected by a panel of industry professionals, then go on to perform at the final at Riverside Theatres in Parramatta where students are awarded prizes in categories including best script, best direction, best performance, and best overall production. Prizes are designed to hone the students' talents and include masterclasses, theatre tickets, exclusive behind the scenes opportunities and more!

Plays must be 10 minutes or under and can come from any theatrical genre, giving the students a chance to play to their strengths, speak their minds, and let their imaginations run wild!

Come along and support our bright future stars as they shine live on the BMEC and Riverside stages!

## CURRICULUM LINKS SUMMARY

See website for full details.

### STAGE 2

<b>SUBJECT</b>	Creative Arts – Drama
<b>CONTENT</b>	Playbuilding, Storytelling, The Elements of Drama Making DRAS2.1, DRAS 2.2, Performing DRAS2.3

<b>SUBJECT</b>	English
<b>CONTENT</b>	Text Type: Drama; Plays EN2-OLC-01, EN2-CWT-01, EN2-UARL-01

### STAGE 3

<b>SUBJECT</b>	Creative Arts – Drama
<b>CONTENT</b>	Playbuilding, Storytelling, The Elements of Drama Making DRAS 3.1, DRAS3.2, Performing DRAS3.3

<b>SUBJECT</b>	English
<b>CONTENT</b>	Text Type: Drama; Plays EN3-OLC-01, EN3-CWT-01, EN3-UARL-01, EN3-UARL-02

### STAGE 4

<b>SUBJECT</b>	Creative Arts – Drama
<b>CONTENT</b>	Playbuilding, Script Writing, The Elements of Drama Making 4.1.1, 4.1.2, 4.1.3, 4.1.4, Performing 4.2.1, 4.2.2, 4.2.3, Appreciating 4.3.2

<b>SUBJECT</b>	English
<b>CONTENT</b>	Text Type: Drama; Plays EN4-URA-01, EN4-URB-01, EN4-ECA-01, EN4-ECB-01

# RIVERSIDE



## STAGE 5

**SUBJECT** Drama

**CONTENT** Playbuilding, Script Writing, The Elements of Drama  
Making 5.1.1, 5.1.2, 5.1.3, 5.1.4,  
Performing 5.2.1, 5.2.2, 5.2.3

**SUBJECT** English

**CONTENT** Text Type: Drama; Plays  
EN5-URA-01, EN5-URB-01,  
EN5-ECA-01, EN5-ECB-01

## STAGE 6 PRELIMINARY

**SUBJECT** Drama

**CONTENT** Playbuilding, Script Writing,  
Directing, Group Devised  
Performance  
Making P1.1, P1.2, P1.4, P1.5, P1.6, P1.8  
Performing P2.1, P2.3, P2.4, P2.5

## STAGE 6 HSC

**SUBJECT** Drama

**CONTENT** Group Devised Performance,  
Individual Project: Script Writing  
Making H1.1, H1.3, H1.4, H1.5, H1.7,  
Performing H2.1, H2.2, H2.3, H2.5

**SUBJECT** English – Standard

**CONTENT** Module C: The Craft of Writing  
EN12-1, EN12-2, EN12-3, EN12-5,  
EN12-7

**SUBJECT** English – Advanced

**CONTENT** Module C: The Craft of Writing  
EA12-1, EA12-2, EAL12-3, EAL12-5,  
EAL12-7

**SUBJECT** English – Extension 2

**CONTENT** Major Work  
EEX12-1, EEX12-2, EEX12-3



Photo by Grant Leslie

**DATE & TIME** | Wednesday 29 May at 7:30pm

**VENUE** | Bathurst Memorial  
Entertainment Centre

**DURATION** | 2hrs 30 mins including an interval

**SUITABILITY** | Stages 2, 3, 4, 5 and 6

**COST** | \$50 participant/group  
registration fee

**REGISTRATION** | [bmec.com.au/education](http://bmec.com.au/education)



# TERM 3

EXHIBITION

# DHULUNY

Education Visits are a tailored experience for your class group and include a guided tour of the current exhibition and pre-visit, in-gallery, and post-visit activities hosted by our professional gallery staff.

A major group exhibition curated by internationally renowned Wiradjuri/Kamilaroi artist Jonathan Jones in collaboration with the Wiradyuri Elders with significant commissions by Wiradjuri artists to commemorate the 200-year anniversary of the declaration of Martial Law in Bathurst and to hold space for truth telling and celebrations of Wiradyuri resilience.

Artists: Jonathan Jones and commissioned artists

*Optional Education Kits available for purchase upon enquiry*

## CURRICULUM LINKS

### EARLY STAGE 1

---

**SUBJECT** Visual Arts

---

**CONTENT** Making, Appreciating  
VAES1.1, VAES1.2, VAES1.3, VAES1.4

---

### STAGE 1

---

**SUBJECT** Visual Arts

---

**CONTENT** Making, Appreciating  
VAS1.1, VAS1.2, VAS1.3, VAS1.4

---

### STAGE 2

---

**SUBJECT** Visual Arts

---

**CONTENT** Making, Appreciating  
VAS2.1, VAS2.2, VAS2.3, VAS2.4

---

### STAGE 3

---

**SUBJECT** Visual Arts

---

**CONTENT** Making, Appreciating  
VAS3.1, VAS3.2, VAS3.3, VAS3.4

---

### STAGE 4

---

**SUBJECT** Visual Arts

---

**CONTENT** Artmaking, Critical and Historical Studies  
4.1, 4.2, 4.3, 4.4, 4.5, 4.6, 4.7, 4.8, 4.9, 4.10

---

### STAGE 5

---

**SUBJECT** Visual Arts

---

**CONTENT** Artmaking, Critical and Historical Studies  
5.1, 5.2, 5.3, 5.4, 5.5, 5.6, 5.7, 5.8, 5.9, 5.10

---



## STAGE 6

**SUBJECT** Visual Arts

**CONTENT** Artmaking, Art Criticism and Art History  
P1, P2, P3, P4, P5, P6, H1, H2, H3, H4, H5, H6, P7, P8, P9, P10, H7, H8, H9, H10



*Jonathan Jones, untitled (giran) (detail), 2018, bindu-gaany (freshwater mussel shell), gabudha (rush), gawurra (feathers), marrung dinawan (emu egg), walung (stone), wambuwung dhabal (kangaroo bone), wayu (string), wiiny (wood), 48-channel soundscape / Sound design: Luke Mynott, Sonar Sound. Courtesy the artists. Photograph: Natasha Harth*

**DATE & TIME** | 6 July – 8 September,  
Tuesdays – Fridays, 10am – 5pm

**VENUE** | Bathurst Regional Art Gallery

**DURATION** | 1–1.5 hours

**SUITABILITY** | Early Stage 1 – Stage 6

**COST** | \$10pp or \$8.50pp for 25+ students, Stages 1 – 4: 1 free teacher/10 students, Stage 5 – 6: 1 free teacher/15 students

**BOOKINGS** | BRAG Audience Engagement Officer: 02 6333 6151  
brag@bathurst.nsw.gov.au

# TERM 3

BMEC PRESENTS  
A CDP AND TALL STORIES'  
PRODUCTION OF

# THE GRUFFALO

Based on the award  
winning book by  
Julia Donaldson &  
Alex Scheffler

A mouse took a stroll through the deep, dark wood ...

After sell-out seasons across the world, including London's West End & Broadway, *The Gruffalo* returns to Australia.

Join Mouse on a daring adventure through the deep, dark wood in this magical, musical adaptation of the classic picture book by Julia Donaldson and Axel Scheffler.

Searching for hazelnuts, Mouse meets the cunning Fox, the eccentric old Owl and the party mad Snake. Will the story of the terrifying Gruffalo save Mouse from ending up as dinner for these hungry woodland creatures? After all, there's no such thing as a Gruffalo – is there?

Songs, laughs and scary fun!

## CURRICULUM LINKS

### EARLY STAGE 1

**SUBJECT** English

**CONTENT** Text types: Picture books; Poetry and texts that feature wordplay and figurative language; narrative texts that include examples of character  
ENE-UARL-01

**SUBJECT** Music

**CONTENT** Vocal Music; Song and Rhyme Performing MUES1.1, Listening MUES1.4

### STAGE 1

**SUBJECT** English

**CONTENT** Text types: Picture books; Poetry and texts that feature wordplay and figurative language; narrative texts that include examples of character  
EN1-UARL-01

**SUBJECT** Music

**CONTENT** Vocal Music; Song and Rhyme Performing MUS1.1, Listening MUS1.4

### STAGE 2

**SUBJECT** English

**CONTENT** Text types: Literature from other countries; narrative; characterisation, including examples of stereotypical and archetypal characters; argument and authority  
EN2-UARL-01

**SUBJECT** Music

**CONTENT** Vocal Music; Song and Rhyme Performing MUS2.1, Listening MUS2.4

cdpKids





CDP presents Tall Stories' production of

cdp  
Kids

tall  
stories

THE ADAPTED FROM JULIA DONALDSON  
AND AXEL SCHEFFLER'S AWARD-WINNING PICTURE BOOK

# THE GRUFFALO

LIVE  
ON STAGE

*The Gruffalo* © Julia Donaldson  
& Axel Scheffler 1999 – Macmillan  
Children's Books

for ages  
3+



**DATE & TIME** | Friday 9 August at 10am and noon

**VENUE** | Bathurst Memorial  
Entertainment Centre

**DURATION** | 55 minutes

**SUITABILITY** | 3+, Early Stage 1,  
Stages 1 & 2

**COST** | \$22 per student.  
1 free teacher/15 students

**BOOKINGS** | [bmec.com.au/education](http://bmec.com.au/education)

# TERM 3

BMEC PRESENTS  
A MELBOURNE THEATRE  
COMPANY PRODUCTION

## SLAP. BANG. KISS.

By Dan Giovannoni

SLAP. A video of 16-year-old Immi hitting a security officer goes viral.

BANG. Sofia's impassioned speech for the victims of a school shooting makes international news.

KISS. In the car park of a small-town supermarket, people rally around Darby and Daniel as they lock lips in an attempt to set the world record for the longest kiss.

Exploring themes of activism, community and hope, *SLAP. BANG. KISS.* tracks three young people whose stories kick-start a series of events none of them could have anticipated, transforming them into global symbols of revolution. But when their stories go viral and the whole world is watching, what will they do next?

Shortlisted for the 2021 Victorian Premier's Literary Awards, this bold new play produced by Melbourne Theatre Company is from multi-award-winning playwright Dan Giovannoni and directed by Katy Maudlin.

*'Director Katy Maudlin expertly utilises her team to show students across the state what a benchmark VCE Drama performance could look like.'* Arts Hub

Best Performance by a Theatre Company for VCE Drama – 2022 Drama Victoria Awards

*SLAP. BANG. KISS.* is complemented by a suite of free, media-rich, digital resources to enhance the theatre experience for students, teachers and inquisitive general audiences. A downloadable resource pack with links to the VCE and National Drama curriculum explores the context, characters and production areas in *SLAP. BANG. KISS.* and includes pre- and post-show classroom activities. Digital resources include a 360° virtual set design tour, photo galleries, and in-depth interviews with cast and creative team.

## CURRICULUM LINKS

### STAGE 4

**SUBJECT** Drama

**CONTENT** Appreciating 4.3.1, 4.3.2, 4.3.3  
Other Dramatic Contexts: Scripted Drama

### STAGE 5

**SUBJECT** Drama

**CONTENT** Appreciating 5.3.1, 5.3.2, 5.3.3  
Other Dramatic Contexts

### STAGE 6

**SUBJECT** Drama

**CONTENT** Critically Studying  
P3.1, P3.2, P3.3, P3.4  
H3.1, H3.2, H3.3, H3.4, H3.5

This production is on the VCE Curriculum with extensive resources that can be applied to the NSW Curriculum. We encourage teachers to look at these to help in your decision making about how you can apply this to your students learning. Could also link to Critical and Creative Thinking, Ethical Understanding, PDHPE, Cultural Studies. See the website for more information.

MELBOURNE  
THEATRE COMPANY



NEXTSTAGE NCM  
Made possible by MTC's Patron's Giving Circle



*SLAP. BANG. KISS.* was commissioned through NEXT STAGE Writers' Program with the support of our Playwrights Giving Circle Donors, The Ian Potter Foundation, Naomi Milgrom Foundation, The Myer Foundation, Malcolm Robertson Foundation and The University of Melbourne.





*This production contains coarse language, references to gun violence and homophobia, theatrical haze effects and dynamic sound.*

**DATE & TIME** | Tuesday 17 September at 11am

**VENUE** | Bathurst Memorial  
Entertainment Centre

**DURATION** | 60 minutes plus Q&A

**SUITABILITY** | Stage 5 and 6

**COST** | \$27 per student,  
1 free teacher/20 students

**BOOKINGS** | [bmec.com.au/education](http://bmec.com.au/education)



# TERM 3

BMEC PRESENTS  
AN ERTH VISUAL  
& PHYSICAL INC  
PRODUCTION

## ARC

A place to keep the most precious of things. A place to embrace the awe and wonder of nature.

Showcasing exquisite puppetry, an enigmatic host, audience interaction and a world of rare and exotic animals, *ARC* is a profound experience that embraces the natural world and the creatures that cohabit this place we call Earth.

*ARC* presents intimate, magical encounters with rare and vulnerable species, raising important questions about our collective and individual relationship with nature and loss.

Renowned as innovators of physical and visual theatre, for the past three decades Erth's body of work has explored the depths of the past. With *ARC*, they look unblinkingly to the future, as this menagerie of animals transforms the stage before your very eyes.

*"It's an invocation, especially to the children, to think about their place in the natural world; about where they fit in with these remarkable animals."* Artsplorers

Also performing at Orange Civic Theatre  
September 24 at 10:30am and 12:30pm.  
Call 02 6393 8112 to book.

## CURRICULUM LINKS SUMMARY

See website for full details.

### STAGE 2

**SUBJECT** English

**CONTENT** Text types: plays; poetry, Texts that include strong examples of: imagery, symbol and connotation; context and perspective  
EN2-UARL-01

**SUBJECT** Drama

**CONTENT** Drama Forms: Puppetry  
DRAS2.4

**SUBJECT** Science & Technology

**CONTENT** Living World  
ST2-4LW-S

### STAGE 3

**SUBJECT** English

**CONTENT** Text types: plays; poetry, Texts that include strong examples of: imagery, symbol and connotation; context and perspective  
EN3-UARL-01, EN3-UARL-02

**SUBJECT** Drama

**CONTENT** Drama Forms: Puppetry  
DRAS3.4

**SUBJECT** Science & Technology

**CONTENT** Living World  
ST3-4LW-S



This project has been assisted by the Australian Government through Creative Australia, its arts funding and advisory body, and the NSW Government through Create NSW.

## STAGE 4

**SUBJECT** English

**CONTENT** Text Type: Drama text; Short prose.  
EN4-URA-01, EN4-URB-01,  
EN4-URC-01

**SUBJECT** Science

**CONTENT** Living World  
SC4-1VA, SC4-14LW

*This performance contains fog and smoke effects, and loud noises.*

Erth and BMEC are committed to accommodating children with autism, vision impairment, mobility challenges and anything else that comes our way. It is vital that every child has a fun, valid and worthy experience. An Auslan interpreted, captioned or relaxed performance can be accommodated upon request.

**Pair this show up with a visit to the Australian Fossil & Mineral Museum to explore the concept of the endangered and the extinct. See page 10 for more info.**



**DATE & TIME** | Friday 20 September at 10am and 12:30pm

**VENUE** | Bathurst Memorial Entertainment Centre

**DURATION** | 55 minutes plus Q&A

**SUITABILITY** | Stages 2, 3 & 4

**COST** | \$22 per student.  
1 free teacher/15 students

**BOOKINGS** | [bmec.com.au/education](http://bmec.com.au/education)

# TERM 3 & 4

## EXHIBITION

# WE GROW ACCUSTOMED TO THE DARK

Education Visits are a tailored experience for your class group and include a guided tour of the current exhibition and pre-visit, in-gallery, and post-visit activities hosted by our professional gallery staff.

Inspired by Emily Dickenson's poem for darkness, artists in this season will explore some of the ancient and contemporary conditions of our nighttime lives, from the economies of sleep to stargazing and storytelling and current environmental concerns facing the astral ecologies of outer space – including meteoric mining to light pollution. The exhibition allows for the 'uncertain step' we take into the dark of night, the unknown in our future, ultimately offering our interconnectedness with the cosmos as a guiding path, and it too with all the physical environments of our planet.

Artists: Naminapu Maymuru-White, David Horvitz, Jazz Money, Shireen Taweel and others.

*Optional Education Kits available for purchase upon enquiry*

## CURRICULUM LINKS

### EARLY STAGE 1

**SUBJECT** Visual Arts

**CONTENT** Making, Appreciating  
VAES1.1, VAES1.2, VAES1.3, VAES1.4

### STAGE 1

**SUBJECT** Visual Arts

**CONTENT** Making, Appreciating  
VAS1.1, VAS1.2, VAS1.3, VAS1.4

### STAGE 2

**SUBJECT** Visual Arts

**CONTENT** Making, Appreciating  
VAS2.1, VAS2.2, VAS2.3, VAS2.4

### STAGE 3

**SUBJECT** Visual Arts

**CONTENT** Making, Appreciating  
VAS3.1, VAS3.2, VAS3.3, VAS3.4

### STAGE 4

**SUBJECT** Visual Arts

**CONTENT** Artmaking, Critical and Historical Studies  
4.1, 4.2, 4.3, 4.4, 4.5, 4.6, 4.7, 4.8, 4.9, 4.10

### STAGE 5

**SUBJECT** Visual Arts

**CONTENT** Artmaking, Critical and Historical Studies  
5.1, 5.2, 5.3, 5.4, 5.5, 5.6, 5.7, 5.8, 5.9, 5.10



## STAGE 6

**SUBJECT** Visual Arts

**CONTENT** Artmaking, Art Criticism and Art History  
P1, P2, P3, P4, P5, P6, H1, H2, H3, H4, H5, H6, P7, P8, P9, P10, H7, H8, H9, H10

*Naminapu Maymuru-White, Milngyawuy 7, 2022, earth pigment on stringy bark (eucalyptus sp.) Approximately 220 x 270 cm dimensions variable (per panel) Images courtesy the Artist and Buku Larrngay Mulka. Photo: Mark Pokorny Collection in the Museum of Contemporary Art Australia.*



**DATE & TIME** | 21 September – 17 November,  
Tuesdays – Fridays, 10am – 5pm

**VENUE** | Bathurst Regional Art Gallery

**DURATION** | 1 – 1.5 hours

**SUITABILITY** | Early Stage 1 – Stage 6

**COST** | \$10pp or \$8.50pp for 25+ students, Stages 1–4: 1 free teacher/10 students, Stage 5–6: 1 free teacher/15 students

**BOOKINGS** | BRAG Audience Engagement Officer: 02 6333 6151  
brag@bathurst.nsw.gov.au

# TERM 4

BMEC PRESENTS AN  
AUSTRALIAN THEATRE  
FOR YOUNG PEOPLE  
& ARCHIPELAGO  
PRODUCTION

## PAST THE SHALLOWS

Written by Julian Larnach  
Based on the novel by  
Favel Parrett, Directed by  
Ben Winspear

Keep your eyes on the water

Harry and Miles live with their father, an abalone diver, on the wild and beautiful south coast of Tasmania. With their father largely absent, they look after each other as best they can. Over a school holiday while Miles works on the boat, Harry begins an unlikely friendship that will upset the delicate balance holding this unpredictable world together.

Adapted by playwright Julian Larnach from Favel Parrett's award-winning debut novel, *Past the Shallows* is an ode to brotherhood and a heart-wrenching, lyrical exploration of mortality, family secrets and the capacity for both brutality and tenderness within contemporary masculinity.

Winner of four Tasmanian Theatre Awards

## CURRICULUM LINKS

### STAGE 4

**SUBJECT** Drama

**CONTENT** Playbuilding & Dramatic contexts:  
Scripted Drama, Realism

### STAGE 5

**SUBJECT** Drama

**CONTENT** Playbuilding & Dramatic contexts:  
Scripted Drama, Realism

### STAGE 6

**SUBJECT** Drama

**CONTENT** Contemporary Australian Theatre  
Practice, Elements of Production  
in Performance; Improvisation,  
Playbuilding & Acting

*This play contains themes of alcoholism and family violence*

**ARCHIPELAGO**  
PRODUCTIONS

**AT YP**

SUPPORTED BY



*This project has been assisted by the Australian Government through Creative Australia, its arts funding and advisory body.*





**DATE & TIME** | Friday 25 October at 11am

**VENUE** | Bathurst Memorial  
Entertainment Centre

**DURATION** | 75 minutes plus Q&A

**SUITABILITY** | Stage 5 and 6 but could  
be enjoyed by Stage 4

**COST** | \$27 per student  
1 free teacher/20 students

**BOOKINGS** | [bmec.com.au/education](http://bmec.com.au/education)



# TERM 4

## EXHIBITION

# BLUE ASSEMBLY

Education Visits are a tailored experience for your class group and include a guided tour of the current exhibition and pre-visit, in-gallery, and post-visit activities hosted by our professional gallery staff.

This exhibition presents new ways of understanding the ocean and the adjacent blue spaces of our planet. It invites you to consider how we may be able to think together with these liquid, vast, biodiverse and non-binary spaces to speculate on our collective future.

Artworks reveal cutting-edge perspectives and research, and stimulate discussions about race, the ongoing extractive colonial project, climate crises, decolonisation, languages, industries, sci-fi, diasporas, interspecies relations and kinship.

Artists: Sancintya Mohini Simpson, Isha Ram Das, Elise Rasmussen, Izabela Pluta, Monira Al Qadiri, Tabita Rezaire, Stephanie Comilang, Alicia Mersy, Birrmuyingathi Maali Netta Loogatha, Kuruwarringathi Bijarrb Paula Paul, Salote Tawale, Benjamin Armstrong, Charles Callins, Andreas Angelidakis and others.

*Optional Education Kits available for purchase upon enquiry*

## CURRICULUM LINKS

### EARLY STAGE 1

---

<b>SUBJECT</b>	Visual Arts
----------------	-------------

---

<b>CONTENT</b>	Making, Appreciating VAES1.1, VAES1.2, VAES1.3, VAES1.4
----------------	--

---

### STAGE 1

---

<b>SUBJECT</b>	Visual Arts
----------------	-------------

---

<b>CONTENT</b>	Making, Appreciating VAS1.1, VAS1.2, VAS1.3, VAS1.4
----------------	--

---

### STAGE 2

---

<b>SUBJECT</b>	Visual Arts
----------------	-------------

---

<b>CONTENT</b>	Making, Appreciating VAS2.1, VAS2.2, VAS2.3, VAS2.4
----------------	--

---

### STAGE 3

---

<b>SUBJECT</b>	Visual Arts
----------------	-------------

---

<b>CONTENT</b>	Making, Appreciating VAS3.1, VAS3.2, VAS3.3, VAS3.4
----------------	--

---

### STAGE 4

---

<b>SUBJECT</b>	Visual Arts
----------------	-------------

---

<b>CONTENT</b>	Artmaking, Critical and Historical Studies 4.1, 4.2, 4.3, 4.4, 4.5, 4.6, 4.7, 4.8, 4.9, 4.10
----------------	---

---

### STAGE 5

---

<b>SUBJECT</b>	Visual Arts
----------------	-------------

---

<b>CONTENT</b>	Artmaking, Critical and Historical Studies 5.1, 5.2, 5.3, 5.4, 5.5, 5.6, 5.7, 5.8, 5.9, 5.10
----------------	--

---

## STAGE 6

**SUBJECT** Visual Arts

**CONTENT** Artmaking, Art Criticism and Art History  
P1, P2, P3, P4, P5, P6, H1, H2, H3, H4, H5, H6, P7, P8, P9, P10, H7, H8, H9, H10

*Monira Al Qadiri, Divine Memory, 2019. still from video, 5:00 min. Courtesy of the artist.*

**DATE & TIME** | 30 November 2024 – 2 February 2025, Tuesdays – Fridays, 10am – 5pm

**VENUE** | Bathurst Regional Art Gallery

**DURATION** | 1 – 1.5 hours

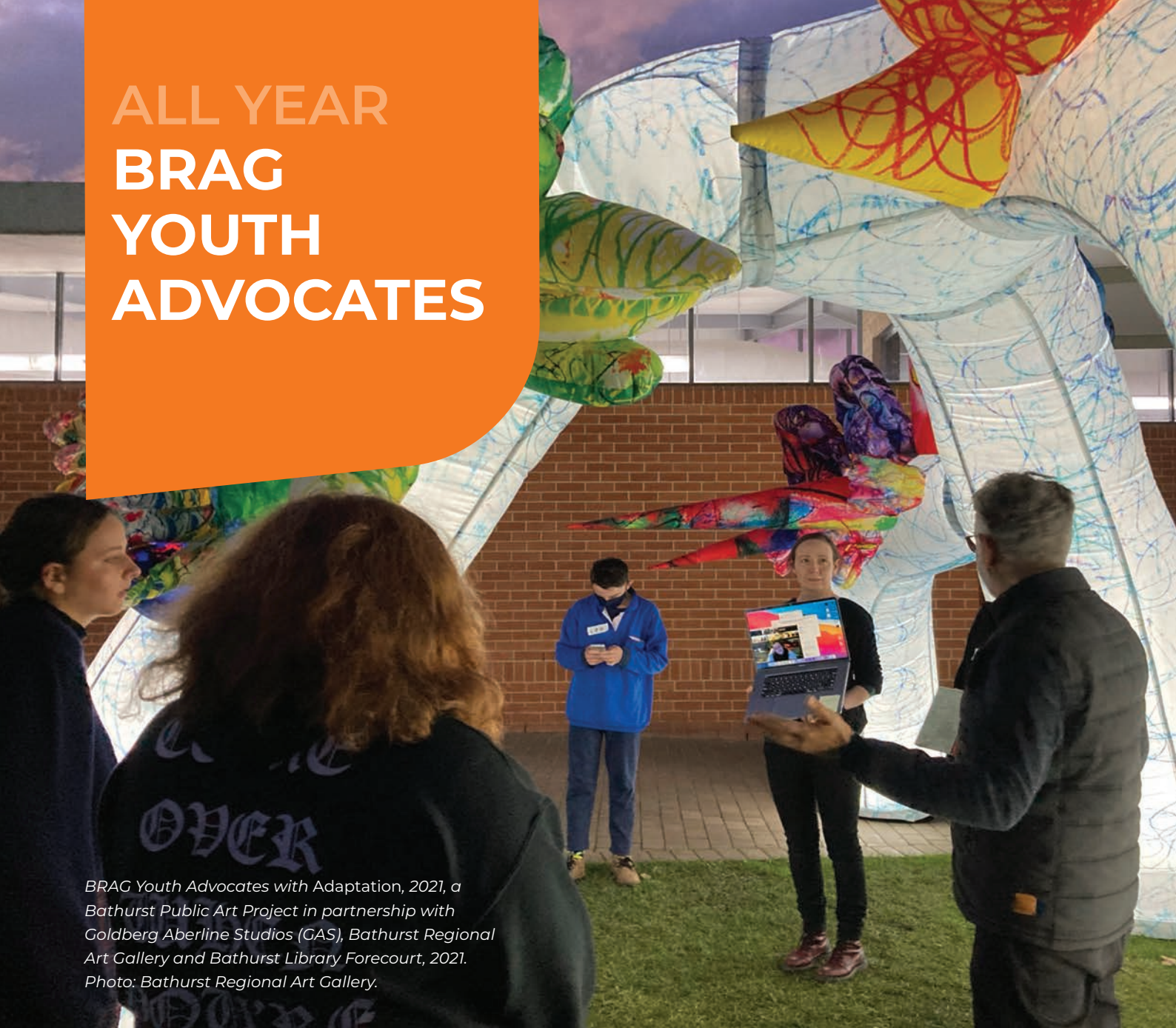
**SUITABILITY** | Early Stage 1 – Stage 6

**COST** | \$10pp or \$8.50pp for 25+ students, Stages 1 – 4: 1 free teacher/10 students, Stage 5–6: 1 free teacher/15 students

**BOOKINGS** | BRAG Audience Engagement Officer: 02 6333 6151  
brag@bathurst.nsw.gov.au



# ALL YEAR BRAG YOUTH ADVOCATES



*BRAG Youth Advocates with Adaptation, 2021, a Bathurst Public Art Project in partnership with Goldberg Aberline Studios (GAS), Bathurst Regional Art Gallery and Bathurst Library Forecourt, 2021. Photo: Bathurst Regional Art Gallery.*

BRAG Youth Advocates are a group of enthusiastic 15 to 24-year-olds who come together to learn about the visual arts industry and gain experiences through developing and delivering projects, workshops, studio visits, and event management.



**DATE & TIME** | Year Round

**VENUE** | Bathurst Regional Art Gallery

**SUITABILITY** | Ages 15 – 24

**COST** | Free

**EXPRESSIONS  
OF INTEREST** |

BRAG Audience  
Engagement Officer:  
02 6333 6151  
[brag@bathurst.nsw.gov.au](mailto:brag@bathurst.nsw.gov.au)





# GETTING HERE

Getting to Bathurst is easy from any direction using the Great Western Highway, Mid Western Highway or Mitchell Highway. Each cultural facility has slightly different parking arrangements but buses are able to get very close to if not directly outside each facility for drop offs and pick-ups. Bus parking is located nearby. Specific details will be supplied to you for each booking. Limited access is available via rail and public transport.

Ask us for more information to help plan your trip.



## BATHURST MEMORIAL ENTERTAINMENT CENTRE

105 William St Bathurst

**02 6333 6161**



## CHIFLEY HOME & EDUCATION CENTRE

10-12 Busby St South Bathurst

**02 6333 6152**



## BATHURST REGIONAL ART GALLERY

70-78 Keppel St Bathurst

**02 6333 6555**



## NATIONAL MOTOR RACING MUSEUM

400 Panorama Ave Mount Panorama

**02 6333 1872**



## BATHURST LIBRARY

70-78 Keppel St Bathurst

**02 6333 6555**



## BATHURST RAIL MUSEUM

126 Havannah St Bathurst

**02 6338 2850**



## AUSTRALIAN FOSSIL & MINERAL MUSEUM

224 Howick St Bathurst

**02 6333 6281**



# BATHURST

Australian Fossil & Mineral Museum



**BMEC**  
BATHURST MEMORIAL  
ENTERTAINMENT CENTRE

BATHURST  
**LIBRARY**  
DISCOVER MORE.

**BRAG**  
Bathurst Regional Art Gallery

BATHURST  
**RAIL MUSEUM**

  
**CHIFLEY HOME**  
AND EDUCATION CENTRE

  
**NATIONAL  
MOTOR RACING  
MUSEUM**  
BATHURST



